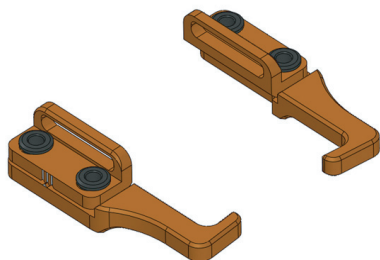
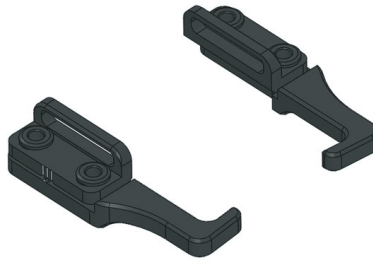


## ZT1000 Adjustable Battery Holder (for XRAY T4 Orange)



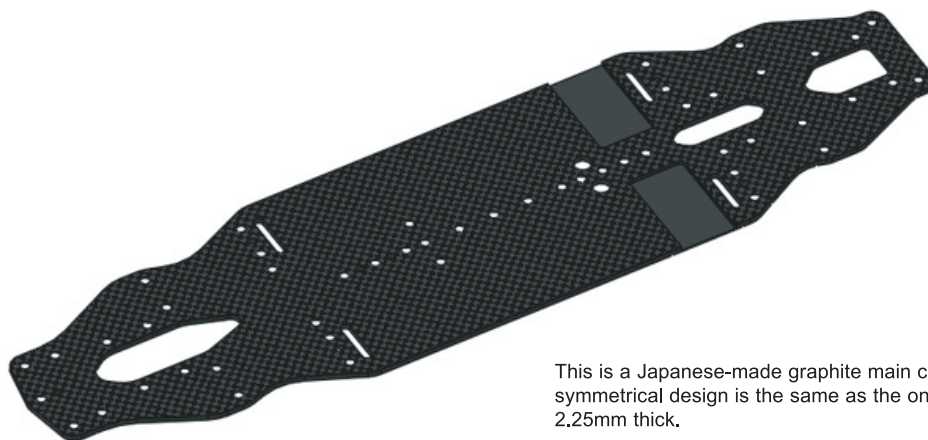
This adjustable battery holder for XRAY T4 is made from A7075 extra-super duralumin. With the pitch about 1mm on both the right and left sides, it can be adjusted in three steps. It moves freely longitudinally along the groove. The glass tape holder can be used with or without the side guard.

## ZT1001 Adjustable Battery Holder (for XRAY T4 Black)



This adjustable battery holder for XRAY T4 is made from A7075 extra-super duralumin. With the pitch about 1mm on both the right and left sides, it can be adjusted in three steps. It moves freely longitudinally along the groove. The glass tape holder can be used with or without the side guard.

## ZT1002 Chassis GRAPHITE (for XRAY T4 '17)



This is a Japanese-made graphite main chassis for XRAY T4' 17. The symmetrical design is the same as the one included in the kit. It is 2.25mm thick.

## ZT1004 Shock Tower Front GRAPHITE (for XRAY T4 '17)



This is a Japanese-made graphite front shock tower for XRAY T4' 17. The design is the same as the one included in the kit. It is 3.0mm thick.

## ZT1005 Shock Tower Rear GRAPHITE (for XRAY T4 '17)



This is a Japanese-made graphite rear shock tower for XRAY T4' 17. The design is the same as the one included in the kit. It is 3.0mm thick.

JAN	Part Number	Part Name	Price (JPY)	QTY
4580012610009	ZT1000	Adjustable Battery Holder (for XRAY T4 Orange)	4,300	
4580012610016	ZT1001	Adjustable Battery Holder (for XRAY T4 Black)	4,300	
4580012610023	ZT1002	Chassis GRAPHITE (for XRAY T4 '17)	8,800	
4580012610047	ZT1004	Shock Tower Front GRAPHITE (for XRAY T4 '17)	1,700	
4580012610054	ZT1005	Shock Tower Rear GRAPHITE (for XRAY T4 '17)	1,800	

Shop name